



European Union
European Regional
Development Fund

[View microsite](#)

[Enquire now](#)

PREMIUM WORKSPACE TO LET

COMPLETED Q1 2020. 183-441 SQFT. SPACE2WORK REDRUTH THE HOUSE



[View microsite](#)

[Enquire now](#)


Space2Work
Redruth


Space2Work
Redruth
THE HOUSE

BUILT FOR BUSINESS
BUILT FOR YOU.

At **Space2work** we create great places for people to work, where small business thrives. **Redruth The House** is our flagship serviced office workspace development.

14

Workspaces

185-250 sqft

6 Workspaces

350-450 sqft

8 workspaces



Awarded to
Space2work Redruth
Best Development

2021



Awarded to
Space2work Redruth
Best Marketing

2021



Awarded to
Space2work Warminster
Best Development

2022



Awarded to
Space2work Warminster
Best Marketing

2022



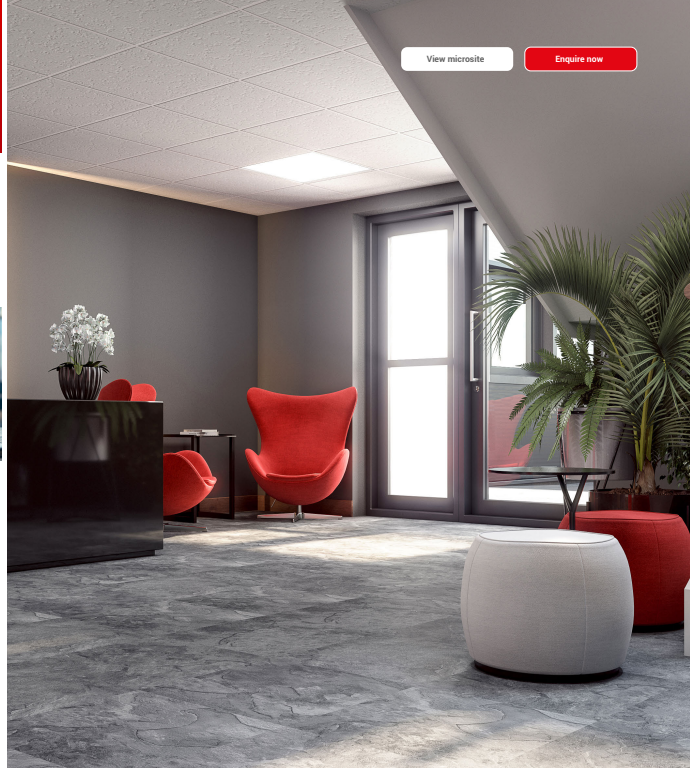


- New development
- 14 Interior designed workspaces
- Ready to work serviced offices
- Shared meeting facilities
- Designed & built for small business

The award winning development comprises 14 premium serviced office workspaces from 185 – 450 sqft. Featuring shared reception, meeting facilities and allocated parking.

Built to the Breeam Excellent build certification in partnership with the European Regional Development Fund and located on Cornwall Business Park West, adjacent to the Scorrier junction of the A30.

Redruth The House is an unrivalled space to work in the heart of Cornwall.





[View microsite](#)

[Enquire now](#)

Redruth
The House



[View Showreel](#)

The fully furnished interior designed workspaces are turnkey ready to work environments for small business.

Light, fresh, dynamic workspaces for Cornwall's next generation of businesses.

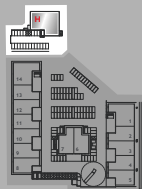
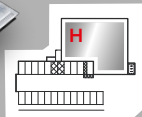
The following features are included in your rent:

- High speed broadband connection
- Heat, light & power
- Shared meeting room, reception and kitchen facilities
- Daily Cleaning
- Allocated Parking
- Bike Store.



Redruth The House

Access is via Space2work
Redruth (shown grey)



[View microsite](#)

[Enquire now](#)

Impressive, contemporary
workspace spread over two
stories of a stylish new office
building.

Workspaces available:

- FF H 248 sqft
- FF I 183 sqft
- FF J 258 Sqft
- FF K 388 Sqft
- FF L,M 312 Sqft
- FF N 441 Sqft
- GF A,C 248 sqft
- GF B 183 sqft
- GF D 388 Sqft
- GF E,F 312 Sqft
- GF G 441 Sqft

[View availability](#)

- Development site plan
- Ground floor plan 3D View



At **Space2work** we design, build, own and operate our own developments as part of our long term investment horizon. Enabling us to invest in and deliver higher quality workspace to you, our customers.

Redruth The House represents another step forwards.

Development features include:

- Electric vehicle charging points
- Superfast broadband
- Premium high visibility development signage
- High quality insulated cladding panels manufactured in the UK using British steel
- Premium furnishings
- Remote access CCTV
- Cycle store



[View the showreel](#)



[View microsite](#)

[Enquire now](#)



Enquire now

Redruth The House is located at Scorrier, near Redruth. Access is via Space2work Redruth which forms part of the larger scheme known as Cornwall Business Park.

The development is 1.5 miles to the east of Redruth town centre and approximately 7 miles west of Truro just off the A30 at Scorrier.

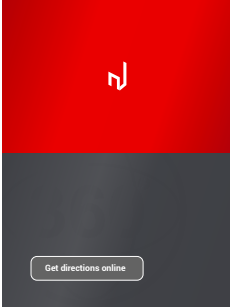
[Get directions online](#)

- Cornwall business park west, Scorrier TR16 5EZ



The Cornwall Business Park site abuts the A30 and is dissected into two separate areas (Cornwall Business Park East & Cornwall Business Park West) by the Paddington to Penzance main railway line.

The site is strategically located in relation to the principal population centres of Camborne, Pool, Redruth and Truro, and the wider areas of west and central Cornwall.



Great new workspace isn't complete without fast, efficient, high calibre service and that's what our impassioned team of friendly professionals deliver. Looking after everything property to ensure things run smoothly from initial enquiry to full term so you can focus on running your business.

The Space2work team are here to help in any way we can, every step of the way. We own and operate all our developments through a central management team with dedicated on site managers at each location.

Ensuring a safe and effective environment for our customers businesses to operate and grow.



[Learn more online](#)

[View microsite](#)

[Enquire now](#)



Space2work

Premium small business workspace

Get in touch and start the journey to your new workspace today.

Enquire now

Prefer to talk to us?

0800 433 7000

• info@s2w.uk • space2work.uk

Our friendly team are always on hand to answer any questions you may have about Space2work, existing or upcoming developments and any workspace needs you have.

Talk to us about any special requirements and preferences and where ever possible we'll do our utmost to make it happen..

Space2work is a Bauer Group Holdings Ltd Company.
All rights reserved. © 2022.

We have in preparing this information used our best endeavours to ensure that the information contained therein is true and accurate, but accept no responsibility and disclaim all liability in respect of any errors, inaccuracies or misstatements contained herein. Prospective purchasers should make their own enquiries to verify the information contained herein.

Brand Management: **The Brand Expert**. Driving Business Through The Power of Brand